

# Navigator™ 520

**BIGGER.SHARPER.BOLDER.**



## Features

- Rugged Experience Better Viewability**  
 Experience a 20% larger screen\* offers bolder, brighter, more accurate color representation.
- Rugged Design**  
 Drop tested, dust tight and water resistant for challenging work environments including extreme heat up to 122°F / 50°C
- PPE Compatible**  
 Works with more PPE than other head-worn devices
- Revolutionary Modular Design**  
 Enables on-the-job agility and adaptability to support even more use cases
- High-resolution camera**  
 Stunning, modular 48MP camera sensor even in low light settings
- Enhanced Remote Collaboration**  
 Improves productivity, saves travel costs and reduces equipment downtime
- Full-shift**  
 Work comfortably all day and easily hot-swap your battery without losing a minute on the job

## Specification

<b>General</b>	Operating System	Android 11 (AOSP) + WearHF™ hands-free interface + Enterprise features
	Chipset	2.0 GHz 8-core Qualcomm® Snapdragon™ 662 with Adreno 610 GPU - OpenGL® ES 3.2 & OpenCL™ 2.0
	Memory	64GB internal storage / 4GB RAM / MicroSD slot (max card supported 512GB)
	Weight	9.7oz/274g
	Ruggedization	IP66, MIL-STD-810H, 6.5 feet / 2-meter drop
	Dedicated Buttons	Power button (with integrated fingerprint sensor), Programmable: action button, left button, right button
	Ports	1/8" / 3.5mm audio, 1 USB Type-C
	Boom Arm	Adjusts six ways for most head sizes, left or right eye compatible, display can be moved out of way when not in use
	Operating Temperature, Humidity	-4°F to +122°F / -20°C to +50°C, 5% to 95% relative humidity (non-condensing)
	Included Applications	Document Navigator, Camera with Barcode Reader, Audio Recorder, Video Recorder, Webpage Viewer, Cloud Sync, Media Player, Calculator, Pedometer, Timer
Languages & Dialects Supported	Chinese (Cantonese, Mandarin-Simplified and Traditional), Czech, Dutch, English (American, Australian, British), French, German, Indonesian, Italian, Japanese, Korean, Polish, Portuguese, Russian, Spanish, Thai	
Sign-in Options	Companion App, Voice Keyboard with secure mode	
<b>Connectivity &amp; Sensors</b>	Bluetooth	Bluetooth® 5.1
	Wi-Fi	802.11 a/b/g/n/ac - 2.4 GHz and 5GHz
	GPS and Location	<ul style="list-style-type: none"> <li>• GPS, Glonass, BeiDou, Galileo, QZSS, and SBAS</li> <li>• NavIC support</li> <li>• Dual-Frequency GNSS (L1 + L5)</li> <li>• Qualcomm® Sensor-Assisted Positioning</li> </ul>
<b>Battery</b>	IMU - Head Movement Tracking	3 IMUs (including 3-axis accelerometers, gyroscopes, eCompass)
	Capacity	2,600 mAh / 10.0 Wh Li-polymer, rechargeable, hot-swappable
<b>Security</b>	Security	Qualcomm® Trusted Execution Environment, Crypto Engine, Secure Boot
	Type	24° field-of-view, 24-bit color LCD, 0.35-inch diagonal, outdoor visible
<b>Display</b>	Resolution	HD (1280X720)
	Microphone	4 digital microphones with active noise cancellation
<b>Audio</b>	Speaker	Accurate voice recognition in noise up to 100 dBA
	Image	Internal 94 dBA loudspeaker
	Video	48 MP Sensor, PDAF with LED flashlight
<b>Camera</b>	Image	48 MP Sensor, PDAF with LED flashlight
	Video	Up to 1080p @ 60fps, >6X zoom in HD, video stabilization. codecs: VP8, VP9, H.264, H.265 HEVC
<b>Compatibility</b>	PPE	Works with many hard hats, protective eyewear, masks and more
<b>Warranty</b>	Warranty	1-Year Warranty
	Extended Service & Support Plans	Available
<b>Accessories</b>	Included	Workband, USB Type-C charging cable
<b>Cloud Services</b>	RealWear Cloud	Accelerates centralized deployment and management of devices

# BIGGER. SHARPER. BOLDER.



## INTRODUCING REALWEAR NAVIGATOR™ 520 WITH HYPERDISPLAY

\*THAN REALWEAR NAVIGATOR 500

RealWear Navigator™ 520 is the latest device in the RealWear Navigator™ 500 Series. Our new flagship wearable offers an upgraded display while maintaining the features of the RealWear Navigator 500 that you know and love, making it our best wearable yet .

## BUILT FOR PRODUCTIVITY. DESIGNED FOR SAFETY.

### Full-Shift, Hands-Free Use

Work comfortably all day with a full-shift battery. Keep your hands free and your vision unobstructed for maximum safety.

### Revolutionary Modular Design

Expand your functionality and tackle even more issues using accessories such as our Thermal Camera Module.

### Enhanced Remote Collaboration

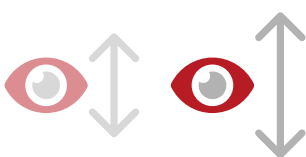
Harness the power of over 200 voice-optimized apps to improve productivity, save travel costs, and reduce equipment downtime.

### Secure and Seamless

Get your devices deployed easily and managed securely with the support of RealWear Cloud and MDMs such as Microsoft Intune.



## EXPERIENCE BETTER VIEWABILITY



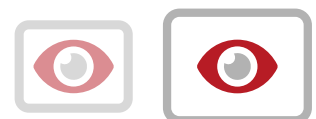
### Longer Eye Relief

With longer eye relief, you can position the display farther from your eye to see the screen more easily.



### Larger Eye Box

With a larger eye box, you can more easily find the perfect viewing angle.



### Higher Resolution

Get sharper visuals and better color reproduction from a larger High Definition display.

## SIDE-BY-SIDE COMPARISON

### COREDISPLAY

REALWEAR NAVIGATOR 500

WVGA (854x480)
20°
20mm
8x5mm
0.32"

RESOLUTION

FIELD OF VIEW

EYE RELIEF

EYE BOX

DISPLAY SIZE

### HYPERDISPLAY

REALWEAR NAVIGATOR 520

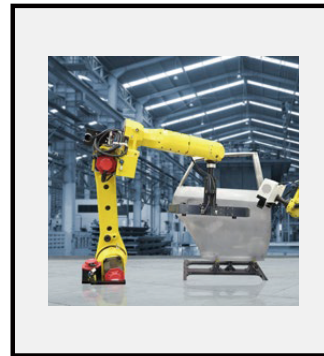
HD (1280x720)
24°
30mm
14x14mm
0.35"

## INTRODUCING THE HYPERDISPLAY



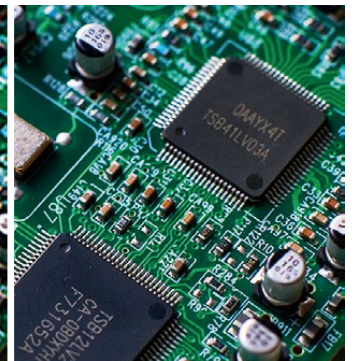
### Bigger

Experience a 20% larger screen\* while maintaining awareness for the best of both worlds.



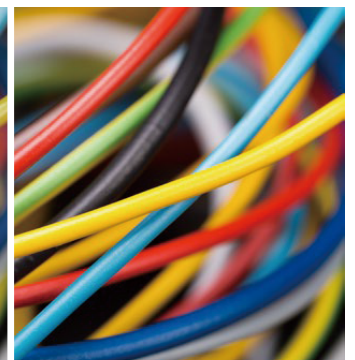
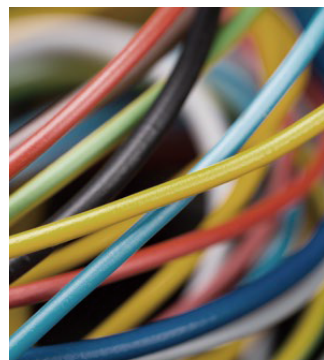
### Sharper

With twice the resolution\*, see text, graphics, and your environment in more detail.



### Bolder

HyperDisplay offers bolder, brighter, more accurate color representation\*.



\*Than RealWear Navigator 500

## SYSGRATION®

6Fl., No.1,Sec.1, Tiding Blvd., Neihu Dist., Taipei City, Taiwan  
 marketing.amd@sysgration.com | 02-2790-0088 | www.sysgration.com

